

danica  
STUDIO



Fall & Winter 2025

## categories

- 43 Imprint Collection
- 47 Coasters
- 50 Mugs
- 53 Water Bottles
- 53 Sustain Tea Infusers
- 54 Dishtowels
- 63 Swedish Sponge Cloths
- 64 Crossbody Bags
- 66 Hip Bags
- 67 Tote Bags
- 69 Wall Art
- 70 Throws
- 72 Candle Holders
- 74 Rugs
- 76 Doormats
- 78 Bandanas
- 79 Scrunchies
- 79 Sleep Masks
- 80 Embroidered Flat Pouches
- 80 Embroidered Coin Purses
- 81 Zipper Pouches
- 81 Halfmoon Pouches
- 82 Quilted Cosmetic Bags
- 83 Cosmetic Bags
- 84 Embroidered Pouches
- 85 Dopp Bags
- 86 Jewelry Boxes & Travel Cases
- 88 Catch-All Trays
- 89 Trinket Trays
- 90 Notebooks
- 95 Reusable Gift Wraps
  
- 96 Terms & Conditions

## collections

- 6 Dogwood
- 8 Folktale
- 10 Wildgrove
- 14 Formation
- 18 Gardenland
- 20 Venus
- 24 Pilipala
- 26 Moonlit
- 28 Catbloom
- 32 Nocturna
- 34 Amulet
- 36 Teppi
- 38 Ember
- 40 Plume
- 42 Beloved



# DANICA STUDIO



*Danica Studio was founded in 2009 in Vancouver, where city, ocean, forest, and islands converge against a mountainous backdrop. Our team of designers draws inspiration from this unique setting, along with their desire to travel to faraway lands. Together they collaborate on designs that reflect their shared love of textiles, travel, and the city they call home. This passion and creativity is the foundation from which our products are designed. We invite you to explore the world of Danica Studio.*

*introducing 56 new items*

## THIS IS US



Welcome to Danica. Deeply rooted in our community, we are a family business dedicated to giving back and striving to make a positive impact. Our passionate in-house team of **designers** and **product developers** draws from diverse backgrounds to create distinctive collections for our brands. Fulfilling your needs is our priority. With dedicated **customer service, sales, and accounting** teams, and efficient **operations**, we ensure that every connection point you have with us supports you on your journey.

PHOTOGRAPHY TANYA GOEHRING | PHOTOGRAPHER · DAVID NIDDRIE PHOTOGRAPHY



*A percentage of our profits are donated to Education Without Borders, a registered Canadian charity that fosters educational opportunities and provides educational facilities in disadvantaged regions of the world. [educationwithoutborders.ca](http://educationwithoutborders.ca)*

## CATALOG LEGEND

**Item Name**

**NEW PRODUCT**

Products with a highlight are new

**M1** US\$0.00 C\$0.00

**MINIMUM ORDER**

Also equals the quantity of products in the inner pack



**PROVEN BEST SELLER**

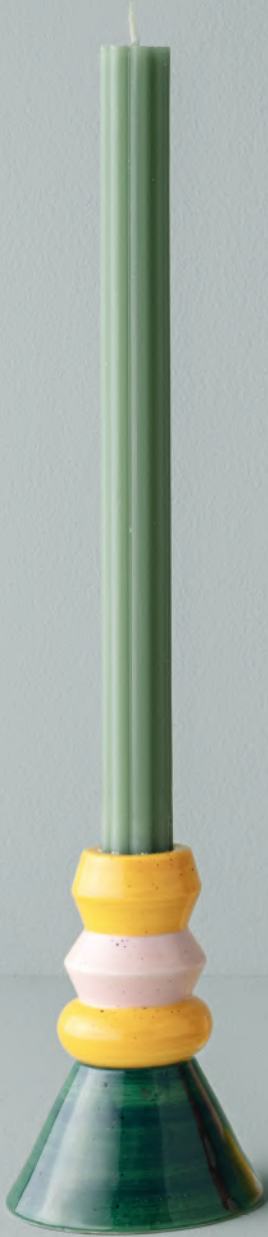
Items marked with a heart icon throughout the catalog are our overall best sellers measured by dollars sold

NEW  
PRODUCTS

**formation  
candle  
holders**

SEE PAGE 72

- Stoneware
- Size varies
- Hand-painted
- Hand wash only
- M4, price varies



Sequence **DCN3705D**  
US\$8.00 C\$10.00



Refract **DCN3706D**  
US\$6.00 C\$8.00



Prism **DCN3703D**  
US\$10.00 C\$12.00



Disco **DCN3702D**  
US\$10.00 C\$12.00



NEW  
PRODUCTS

Teppi DCO3758D



Amulet DCO3757D



Gardenland DCO3756D



## beaded coaster sets

SEE PAGE 48

- Glass beads
- Cotton backing
- DIA4"
- Handmade
- Hand wash only
- M6 U\$14.00 C\$16.00



Disco DCO3710D



Wildgrove DCO3755D



**NEW  
PRODUCTS**

**embroidered  
coin purses**

SEE PAGE 80

- Embroidered
- Cotton velvet
- 4.4 x 4.6"
- M2 U\$10.00 C\$12.50



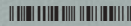
Venus DTV3748D



Wildgrove DTV3723D



Catbloom DTV3747D



**embroidered  
flat pouches**

SEE PAGE 80

- Embroidered
- Cotton velvet
- Cotton lining
- Metal hardware
- 7 x 9.75"
- M2 U\$13.00 C\$17.00



Folktales DTV3735D



Nocturna DTV3749D



Dogwood DTV3744D



NEW PRODUCTS

# imprint trinket dishes

SEE PAGE 44

- Stoneware
- Embossed
- DIA 2.25" x H 1"
- M12 U\$3.50 C\$4.25



Wildgrove DTT3713D



Teppi DTT3712D



Catbloom DTT3711D



# quilted cosmetic bags

SEE PAGE 82

- Cotton velvet
- Cotton accent lining
- Quilted pattern
- 8 x 5 x 2.75"
- M2 U\$13.00 C\$17.00

Fig DTV3750D



Copper DTV3752D



Jade DTV3751D







# DOGWOOD

Roam along the country road, frolic in the yard—Dogwood thrives in places near and far. A playful pup and a palette of rich rust, serene blue, and striking black convey an unassuming beauty.

DESIGNED BY ERIN



**Dogwood Studio Mug**

Stoneware DIA3.5 × H4.25" 14 oz  
M6 US\$6.00 C\$6.50  
DMG3740D



**Dogwood Midi Studio Mug**

Stoneware DIA3.5 × H3.125" 11 oz  
M6 US\$4.50 C\$6.00  
DMG3741D



**Dogwood Trinket Tray**

Stoneware W5.5 × L2.75"  
M6 US\$5.00 C\$6.00  
DTT3742D



**Dogwood Flat Pouch**

Outer: Cotton Velvet; Lining: Cotton;  
Embroidery: Polyester; Hardware: Metal  
W7 × L9.75"  
M2 US\$13.00 C\$17.00  
DTV3744D



**Dogwood Halfmoon Pouch**

Body: Cotton; Embroidery: Polyester  
W4.5 × L4.5"  
M2 US\$7.00 C\$9.00  
DTV3745D



**Dogwood Travel Jewelry Case**

See open view on page 87  
Body: Recycled Cotton Paper; Lining:  
Polyester Velvet L4.25 × D2.5 × H2"  
M6 US\$7.00 C\$10.00  
DTV3736D



**Dogwood Crossbody Bag**

Body: Cotton Canvas; Hardware: Metal  
W5.75 × H7.5 × D1.5"  
M2 US\$15.00 C\$20.00  
DTV3743D



**Dogwood Swedish Sponge Cloth**

70% Cellulose, 30% Cotton W6.5 × L8"  
M6 US\$3.00 C\$3.00  
ESW3746D



**Dogwood Dishtowels Set/2 Assorted**

60% Cotton, 40% Linen W18 × L28"  
M6 US\$10.00 C\$12.50  
DKT3739D





# FOLKTALE

Follow the fox and hare into a land where imagination wanders and worldly wisdom is shared through tales as old as time. Detailed borders outline these creatures' stories with an intricate, tile-like frame.

DESIGNED BY CAITLIN



**Folkale Swedish Sponge Cloth**  
70% Cellulose, 30% Cotton W6.5 x L8"  
M6 US\$3.00 C\$3.00  
ESW3700D



**Folkale Jacquard Dish towel**  
Cotton W18 x L28"  
M6 US\$5.00 C\$6.50  
DKT3729D



**Folkale Dish towels Set/2 Assorted**  
60% Cotton, 40% Linen W18 x L28"  
M6 US\$10.00 C\$12.50  
DKT3728D



**Folkale Catch-All Tray**  
Mango Wood W8 x L5.5 x H1.5"  
M2 US\$7.00 C\$10.00  
DTT3733D



**Folkale Flat Pouch**  
Outer: Cotton Velvet; Lining: Cotton;  
Embroidery: Polyester; Hardware: Metal  
W7 x L9.75"  
M2 US\$13.00 C\$17.00  
DTV3735D



**Folkale Doormat**  
Coiir W18 x L30"  
M2 US\$16.00 C\$21.00  
DDM3738D



**Folkale Studio Tote**  
See reverse on page 68  
Cotton W13 x H16 x D6" /  
Strap Drop 12.5"  
M4 US\$10.00 C\$12.50  
DTB3734D



**Folkale Sustain Tea Infuser**  
Body: Borosilicate Glass;  
Lid: Bamboo Wood 12 oz  
M4 US\$13.50 C\$16.00  
DWB3732D



**Folkale Studio Mug**  
Stoneware DIA3.5 x H4.25" 14 oz  
M6 US\$6.00 C\$6.50  
DMG3730D



**Folkale Midi Studio Mug**  
Stoneware DIA3.5 x H3.125" 11 oz  
M6 US\$4.50 C\$6.00  
DMG3731D





# WILDGROVE

*Unearthing a world of hidden wonders, Wildgrove is an intimate exploration of the plants and fungi growing far from the woodland trail.*

DESIGNED BY ANDREA



**Wildgrove Embroidered Dish towel**

Body: 60% Cotton, 40% Linen;  
Embroidery: Polyester W18 x L28"  
M6 U\$10.00 C\$12.50  
DKT3719D



**Wildgrove Double Cloth Dish towel**

See reverse on page 54  
Cotton W20 x L28"  
M6 U\$6.00 C\$8.50  
DKT3718D



**Wildgrove Beaded Coasters Set/4 Assorted**

Beads: Glass; Backing: Cotton DIA4"  
M6 U\$14.00 C\$16.00  
DCO3755D



INNER DESIGN



**Wildgrove Imprint Trinket Dish**

Stoneware DIA2.25 x H1"  
M12 U\$3.50 C\$4.25  
DTT3713D



**Wildgrove Imprint Trinket Tray**

Stoneware W3.5 x L4.25"  
M6 U\$5.00 C\$6.00  
DTT3717D



**Wildgrove Embroidered Coin Purse**

Body: Cotton Velvet; Embroidery: Polyester  
W4.4 x L4.6"  
M2 U\$10.00 C\$12.50  
DTV3723D



**Wildgrove Imprint Mug**

Stoneware DIA4 x H3.5" 14 oz  
M6 U\$6.00 C\$8.00  
DMG3714D



**Wildgrove Imprint Bowl**

Stoneware DIA6 x H2.25" 20 oz  
M6 U\$7.00 C\$8.50  
DBO3715D



**Wildgrove Imprint Serving Bowl**

Stoneware DIA9.75 x H2.9" 70 oz  
M1 U\$18.00 C\$20.00  
DSV3716D





**Wildgrove To & Fro Tote**

Body: Cotton; Embroidery: Polyester  
W13 x L13.5 x D2.25" / Strap Drop 10"  
M4 U\$10.00 C\$12.50

**DTB3724D**



**Wildgrove Embroidered Notebook**

Outer: 50% Cotton, 50% Linen; Body:  
Recycled Paper; Embroidery: Polyester  
W5.5 x L8 x H0.5"  
M6 U\$10.00 C\$12.50

**DNB3721D**



**Wildgrove Block Print Notebooks  
Set/2 Assorted**

Outer: Cotton; Body: Paper W6 x L8"  
/ W5 x L7"  
M6 U\$8.50 C\$12.00

**DNB3720D**



**Wildgrove Embroidered Pouch**

Body: Cotton Velvet; Embroidery: Polyester  
L5.75 x D2.75 x H4.75"  
M2 U\$13.00 C\$17.00

**DTV3722D**



**Wildgrove Travel Jewelry Case**

See open view on page 87  
Box: Recycled Cotton Paper; Lining:  
Polyester Velvet L4.25 x D2.5 x H2"  
M6 U\$7.00 C\$10.00

**DTV3726D**



**Wildgrove Jewelry Box**

See open view on page 86  
Box: Recycled Cotton Paper; Lining:  
Polyester Velvet L10 x D7.5 x H2"  
M4 U\$17.00 C\$20.00

**DTV3725D**



**Wildgrove Doormat**

Coir W18 x L30"  
M2 U\$16.00 C\$21.00

**DDM3727D**



MEET THE DESIGNER

*andrea*

*Fuelled by tea, a good soundtrack, and the company of her pup Gizmo, Andrea heads up the Creative Team. Her attention to detail appears in her ink pen drawings—and her ability to answer any and all of our questions.*







# FORMATION

The Formation collection gives shape to the wonder we feel for the bands of color that create a sunset, sand that's shaped into stone, and buildings constructed from designs that begin as lines on a page.

DESIGNED BY CAITLIN AND ERIN



**Disco Formation Candleholder**

Stoneware W4 × L5.25 × H4"

M4 U\$10.00 C\$12.00

DCN3702D



**Prism Formation Candleholder**

Stoneware DIA4.25 × H6.25"

M4 U\$10.00 C\$12.00

DCN3703D



**Refract Formation Candleholder**

Stoneware DIA3 × H3"

M4 U\$6.00 C\$8.00

DCN3706D



**Sequence Formation Candleholder**

Stoneware DIA3 × H4.75"

M4 U\$8.00 C\$10.00

DCN3705D



**Disco Formation Mug**

Stoneware DIA3.5 × H4" 16 oz

M4 U\$6.50 C\$8.25

DMG3951D



**Prism Formation Mug**

Stoneware DIA5.5 × H3.5" 14 oz

M4 U\$6.50 C\$8.25

DMG1343D



**Kismet Formation Mug**

Stoneware DIA6 × H3.9" 14 oz

M4 U\$6.50 C\$8.25

DMG2527D



**Refract Formation Mug**

Stoneware DIA5.3 × H3.5" 14 oz

M4 U\$6.50 C\$8.25

DMG1342D



**Sequence Formation Mug**

Stoneware DIA3.25 × H3.5" 14 oz

M4 U\$6.50 C\$8.25

DMG3217D



**Disco Woven Formation Rug**

Cotton W24 × L36"

M2 U\$17.50 C\$22.50

DRU3707D



**Prism Woven Formation Rug**

Cotton W24 × L36"

M2 U\$17.50 C\$22.50

DRU3256D



**Kismet Woven Formation Rug**

Cotton W24 × L36"

M2 U\$17.50 C\$22.50

DRU3255D



**Sequence Woven Formation Rug**

Cotton W24 × L36"

M2 U\$17.50 C\$22.50

DRU3254D





**Disco Formation Dish towels Set/2**

Cotton W18 x L28"  
M6 US\$8.50 C\$11.00

**DKT3709D**



**Kismet Formation Dish towels Set/2**

Cotton W18 x L28"  
M6 US\$8.50 C\$11.00

**DKT2526D**



**Prism Formation Dish towels Set/2**

Cotton W18 x L28"  
M6 US\$8.50 C\$11.00

**DKT1350D**



**Refract Formation Dish towels Set/2**

Cotton W18 x L28"  
M6 US\$8.50 C\$11.00

**DKT1351D**



**Disco Beaded Coasters Set/4 Assorted**

Beads: Glass; Backing: Cotton DIA4"  
M6 US\$14.00 C\$16.00

**DCO3710D**



**Sequence Formation Dish towels Set/2**

Cotton W18 x L28"  
M6 US\$8.50 C\$11.00

**DKT3229D**



**Sequence Swedish Sponge Cloth**

70% Cellulose, 30% Cotton W6.5 x L8"  
M6 US\$3.00 C\$3.00

**ESW3309D**



**Disco Formation Notebook**

Outer: Cotton; Body: Paper W4 x L6"  
M6 US\$3.00 C\$4.00

**DNB3708D**



**Kismet Formation Notebook**

Outer: Cotton; Body: Paper W4 x L6"  
M6 US\$3.00 C\$4.00

**DNB2833D**



**Prism Formation Notebook**

Outer: Cotton; Body: Paper W4 x L6"  
M6 US\$3.00 C\$4.00

**DNB2831D**



**Refract Formation Notebook**

Outer: Cotton; Body: Paper W4 x L6"  
M6 US\$3.00 C\$4.00

**DNB2832D**



**Sequence Formation Dopp Bag**

Cotton, Leather Pull W4.75 x L10 x H5"  
M2 US\$17.50 C\$22.00

**DTV3257D**



**Kismet Formation Dopp Bag**

Cotton, Leather Pull W4.75 x L10 x H5"  
M2 US\$17.50 C\$22.00

**DTV2537D**



**Prism Formation Dopp Bag**

Cotton, Leather Pull W4.75 x L10 x H5"  
M2 US\$17.50 C\$22.00

**DTV1347D**



**Refract Formation Dopp Bag**

Cotton, Leather Pull W4.75 x L10 x H5"  
M2 US\$17.50 C\$22.00

**DTV1348D**





# GARDENLAND

*Ferns and flowers rustle as snakes slither, snails glide, and frogs jump.  
Earthy greens and mushroom browns intermingle with bold pops of  
pink and citron in this magnified glimpse of life in the garden.*

DESIGNED BY CAITLIN



**Gardenland Beaded Coasters Set/4 Assorted**

Beads: Glass; Backing: Cotton DIA4"  
M6 U\$14.00 C\$16.00  
DCO3756D



**Gardenland Double Cloth Dishtowel**

See reverse on page 54  
Cotton W20 x L28"  
M6 U\$6.00 C\$8.50  
DKT3203D



**Gardenland Embroidered Dishtowel**

Body: 60% Cotton, 40% Linen;  
Embroidery: Polyester W18 x L28"  
M6 U\$10.00 C\$12.50  
DKT3228D



**Gardenland Midi Studio Mug**

Stoneware DIA3.5 x H3.125" 11 oz  
M6 U\$4.50 C\$6.00  
DMG3219D



**Gardenland Studio Mug**

Stoneware DIA3.5 x H4.25" 14 oz  
M6 U\$6.00 C\$6.50  
DMG3222D



**Gardenland Swedish Sponge Cloth**

70% Cellulose, 30% Cotton W6.5 x L8"  
M6 U\$3.00 C\$3.00  
ESW3305D



**Gardenland Trinket Tray**

Stoneware W3.875 x H4.25"  
M6 U\$5.00 C\$6.00  
DTT3225D



**Gardenland Halfmoon Pouch**

Cotton; Embroidery: Polyester  
W4.5 x L4.5"  
M2 U\$7.00 C\$9.00  
DTV3204D



**Gardenland Embroidered Pouch**

Body: Cotton Velvet; Embroidery: Polyester  
L5.75 x D2.75 x H4.75"  
M2 U\$13.00 C\$17.00  
DTV3239D

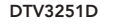




**Gardenland Hip Bag**  
 Cotton Canvas W9 × H6 × D2.5"  
 M2 US\$14.00 C\$17.00  
 DTV3230D



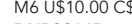
**Gardenland Crossbody Bag**  
 Cotton Canvas; Hardware: Metal  
 W5.75 × H7.5 × D1.5"  
 M2 US\$15.00 C\$20.00  
 DTV3251D



**Gardenland To & Fro Tote**  
 Cotton W13 × L13.5 × D2.25" /  
 Strap Drop 10"  
 M4 US\$10.00 C\$12.50  
 DTB3235D



**Gardenland Embroidered Notebook**  
 Outer: 50% Cotton, 50% Linen; Body:  
 Recycled Paper; Embroidery: Polyester  
 W5.5 × L8 × H0.5"  
 M6 US\$10.00 C\$12.50  
 DNB3214D





# VENUS

*Fantastical florals burgeon with folk art flair. Exuberant lines and textures are arranged in unexpected symmetry while rich ochre and burgundy frolic with soft pink and green, mimicking the duality of nature's fierce beauty.*

DESIGNED BY SIERRA



**Venus Embroidered Coin Purse**  
 Body: Cotton Velvet; Embroidery: Polyester W4.4 × L4.6"  
 M2 U\$10.00 C\$12.50  
 DTV3748D



**Venus Hip Bag**  
 Cotton Canvas W9 × H6 × D2.5"  
 M2 U\$14.00 C\$17.00  
 DTV3753D



**Venus Crossbody Bag**  
 Cotton Canvas; Hardware: Metal  
 W5.75 × H7.5 × D1.5"  
 M2 U\$15.00 C\$20.00  
 DTV3250D



**Venus To & Fro Tote**  
 Body: Cotton; Embroidery: Polyester  
 W13 × L13.5 × D2.25" / Strap Drop 10"  
 M4 U\$12.50 C\$15.00  
 DTB3234D



**Venus Embroidered Pouch**  
 Body: Cotton Velvet; Embroidery: Polyester L5.75 × D2.75 × H4.75"  
 M2 U\$13.00 C\$17.00  
 DTV3238D



**Venus Pencil Cosmetic Bag**  
 Body: Cotton; Lining: Vegan Waxed Cotton L7 × H4"  
 M2 U\$10.00 C\$13.00  
 DTV3206D



**Venus Small Cosmetic Bag**  
 Body: Cotton; Lining: Vegan Waxed Cotton L8 × H5.5"  
 M2 U\$12.00 C\$15.00  
 DTV3209D



**Venus Large Cosmetic Bag**  
 Body: Cotton; Lining: Vegan Waxed Cotton L11.75 × H7"  
 M2 U\$15.00 C\$18.00  
 DTV3205D



**Venus Trinket Tray**  
 Stoneware W4.3 × H4.6"  
 M6 U\$5.00 C\$6.00  
 DTT3224D



**Venus Catch-All Tray**  
 Mango Wood W7 × L5 × H1.5"  
 M2 U\$7.00 C\$10.00  
 DTT3246D



**Venus Travel Jewelry Case**  
 See open view on page 87  
 Box: Recycled Cotton Paper; Lining: Polyester Velvet L4.25 × D2.5 × H2"  
 M6 U\$7.00 C\$10.00  
 DTV3216D



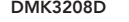
**Venus Jewelry Box**  
 See open view on page 86  
 Box: Recycled Cotton Paper; Lining: Polyester Velvet L10 × D7.5 × H2"  
 M4 U\$17.00 C\$20.00  
 DTV3215D



**Venus Scrunchie**  
Cotton DIA5.5"  
M6 US\$2.50 C\$3.50  
DTV3207D



**Venus Sleep Mask**  
Outer: Cambric Cotton; Fill: Cotton;  
Bag: Cambric Cotton W3.5 x L7.75"  
M6 US\$7.00 C\$9.00  
DMK3208D



**Venus Doormat**  
Cair W18 x L30"  
M2 US\$16.00 C\$21.00  
DDM3236D



**Venus Midi Studio Mug**  
Stoneware DIA3.5 x H3.125" 11 oz  
M6 US\$4.50 C\$6.00  
DMG3218D



**Venus Studio Mug**  
Stoneware DIA3.5 x H4.25" 14 oz  
M6 US\$6.00 C\$6.50  
DMG3221D



**Venus Sustain Tea Infuser**  
Body: Borosilicate Glass; Lid: Bamboo Wood 12 oz  
M4 US\$13.50 C\$16.00  
DWB3199D



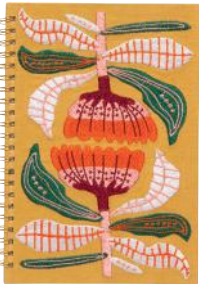
**Venus Throw**  
Cotton W55 x L67"  
M2 US\$30.00 C\$40.00  
DTH3211D



**Venus Double Cloth Dishtowel**  
*See reverse on page 54*  
Cotton W20 x L28"  
M6 US\$6.00 C\$8.50  
DKT3202D



**Venus Dishtowels Set/2 Assorted**  
60% Cotton, 40% Linen W18 x L28"  
M6 US\$10.00 C\$12.50  
DKT3226D



**Venus Embroidered Notebook**  
Outer: 50% Cotton, 50% Linen; Body: Recycled Paper; Embroidery: Polyester W5.5 x L8 x H0.5"  
M6 US\$10.00 C\$12.50  
DNB3213D



**Venus Swedish Sponge Cloth**  
70% Cellulose, 30% Cotton W6.5 x L8"  
M6 US\$3.00 C\$3.00  
ESW3307D









# PILIPALA

*Shapes shift and spin while colors pop and pirouette in a rhythm set in motion long ago. The perpetual appeal of quilt-inspired patterns and block print techniques blend seamlessly with a contemporary palette in this engaging arrangement.*

DESIGNED BY ERIN



**Pilipala Block Print Notebooks Set/2 Assorted**

Outer: Cotton; Body: Paper  
W6 x L8" / W5 x L7"  
M6 US\$8.50 C\$12.00

**DNB3240D**



**Pilipala Swedish Sponge Cloth**

70% Cellulose, 30% Cotton W6.5 x L8"  
M6 US\$3.00 C\$3.00

**ESW3306D**



**Pilipala Block Print Dish Towel**

Cotton W18 x L28"  
M6 US\$6.00 C\$7.00

**DKT3210D**



**Pilipala Imprint Trinket Tray**

Stoneware W5.25 x L3"  
M6 US\$5.00 C\$6.00

**DTT3245D**



**Pilipala Imprint Mug**

Stoneware DIA4 x H3.5" 14 oz  
M6 US\$6.00 C\$8.00

**DMG3243D**



**Pilipala Engraved Coasters Set/4**

Acacia DIA4"  
M6 US\$15.00 C\$18.00

**DCO3201D**



**Pilipala Imprint Bowl**

Stoneware DIA6 x H2.25" 20 oz  
M6 US\$7.00 C\$8.50

**DBO3242D**



**Pilipala Imprint Serving Bowl**

Stoneware DIA9.75 x H2.9" 70 oz  
M1 US\$18.00 C\$20.00

**DSV3244D**





# MOONLIT

Gaze up through a canopy of firs to see the night sky illuminated by the moon and twinkling stars. Gold metallic detailing shines from a backdrop of inky blue, evoking the enchantment of a nocturnal landscape.

DESIGNED BY ANDREA



**Moonlit Studio Tote**  
Metallic Gold, Cotton W13 × H16 × D6" /  
Strap Drop 12.5"  
M4 US\$10.00 C\$12.50  
DTB3233D



**Moonlit Swedish Sponge Cloth**  
Metallic Gold, 70% Cellulose,  
30% Cotton W6.5 × L8"  
M6 US\$3.00 C\$3.00  
ESW3308D



**Moonlit Dishtowels Set/2 Assorted**  
Metallic Gold, 60% Cotton, 40% Linen W18 × L28"  
M6 US\$10.00 C\$12.50  
DKT3227D



**Moonlit Midi Studio Mug**  
Metallic Gold, Stoneware 11 oz  
M6 US\$5.00 C\$6.00  
DMG3220D



**Moonlit Studio Mug**  
Metallic Gold, Stoneware 14 oz  
M6 US\$6.00 C\$7.00  
DMG3223D



**Moonlit Doormat**  
Coir W18 × L30"  
M2 US\$16.00 C\$21.00  
DDM3237D



**Moonlit Small Zipper Pouch**  
Cotton W4.5 × L7"  
M2 US\$6.50 C\$7.50  
DTV3232D



**Moonlit Large Zipper Pouch**  
Metallic Gold, Cotton W7 × L9.75"  
M2 US\$9.00 C\$11.00  
DTV3231D



# CATBLOOM

*Catbloom offers a cat's eye perspective of these sly stewards of gardens. Uninhibited by fences, fancy floral felines explore the world on their own terms.*

DESIGNED BY ANDREA

## INNER DESIGN



### Catbloom Embroidered Coin Purse

Body: Cotton Velvet; Embroidery:  
Polyester W4.4 × L4.6"  
M2 US\$10.00 C\$12.50  
DTV3747D



### Catbloom Imprint Trinket Dish

Stoneware DIA2.25 × H1"  
M12 US\$3.50 C\$4.25  
DTT3711D



### Catbloom Trinket Tray

Stoneware W6.3 × L4.5"  
M6 US\$5.00 C\$6.00  
DTT2514D



### Catbloom Catch-All Tray

Mango Wood W8 × L5 × H1.5"  
M2 US\$7.00 C\$10.00  
DTT3249D



### Catbloom Embroidered Pouch

Body: Cotton Velvet; Embroidery:  
Polyester L5.75 × D2.75 × H4.75"  
M2 US\$13.00 C\$17.00  
DTV2518D



### Catbloom Small Zipper Pouch

Cotton W4.5 × L7"  
M2 US\$6.50 C\$7.50  
DTV2517D



### Catbloom Large Zipper Pouch

Cotton W7 × L9.75"  
M2 US\$9.00 C\$11.00  
DTV2516D



### Catbloom Scrunchie

Cotton DIA5"  
M6 US\$2.50 C\$3.50  
DTV2520D



### Catbloom Jewelry Box

See open view on page 86

Box: Recycled Cotton Paper; Lining:  
Polyester Velvet L10 × D7.5 × H2"  
M4 US\$17.00 C\$20.00  
DTV2529D



### Catbloom Travel Jewelry Case

See open view on page 87

Box: Recycled Cotton Paper; Lining:  
Polyester Suede L4.25 × D2.5 × H2"  
M6 US\$7.00 C\$10.00  
DTV2528D



### Catbloom Hip Bag

Cotton Canvas W9 × H6 × D2.5"

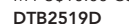
M2 US\$14.00 C\$17.00  
DTV2515D



### Catbloom Studio Tote

Cotton W13 × H16 × D6" /  
Strap Drop 12.5"

M4 US\$10.00 C\$12.50  
DTB2519D





**Catbloom Imprint Mug**  
 Stoneware DIA4 x H3.5" 14 oz  
 M6 U\$6.00 C\$8.00  
**DMG2512D**



**Catbloom Imprint Bowl**  
 Stoneware DIA6 x H2.25" 20 oz  
 M6 U\$7.00 C\$8.50  
**DBO2513D**



**Catbloom Reusable Gift Wrap**  
 85% Recycled Cotton, 15% Recycled Polyester W32 x L32"  
 M6 U\$8.00 C\$10.00  
**DGW2522D**



**Catbloom Midi Studio Mug**  
 Stoneware DIA3.5 x H3.125" 11 oz  
 M6 U\$4.50 C\$6.00  
**DMG2511D**



**Catbloom Studio Mug**  
 Stoneware DIA3.5 x H4.25" 14 oz  
 M6 U\$6.00 C\$6.50  
**DMG2510D**



**Catbloom Embroidered Notebook**  
 Outer: 50% Cotton, 50% Linen; Body: Recycled Paper; Embroidery: Polyester W5.5 x L8 x H0.5"  
 M6 U\$10.00 C\$12.50  
**DNB2542D**



**Catbloom Throw**  
 Cotton W55 x L67"  
 M2 U\$30.00 C\$40.00  
**DTH2535D**



**Catbloom Double Cloth Dish Towel**  
 See reverse on page 54  
 Cotton W20 x L28"  
 M6 U\$6.00 C\$8.50  
**DKT2508D**



**Catbloom Dish Towels Set/2 Assorted**  
 60% Cotton, 40% Linen W18 x L28"  
 M6 U\$10.00 C\$12.50  
**DKT2507D**



**Catbloom Swedish Sponge Cloth**  
 70% Cellulose, 30% Cotton W6.5 x L8"  
 M6 U\$3.00 C\$3.00  
**ESW2681D**



**Catbloom Sleep Mask**  
 Outer: Cambric Cotton; Fill: Cotton;  
 Bag: Cambric Cotton W3.5 x L7.75"  
 M6 U\$7.00 C\$9.00  
**DMK2521D**



**Catbloom Doormat**  
 Coir W18 x L30"  
 M2 U\$16.00 C\$21.00  
**DDM2509D**







# NOCTURNA

*The flutter of the moth's wings softly punctuates the stillness of the night. Nocturna magnifies the neutral-hued beauty of the creatures who find comfort in the darkness and intrigue in the light.*

DESIGNED BY CAITLIN



### Nocturna Flat Pouch

Outer: Cotton Velvet; Lining: Cotton;  
Embroidery: Polyester; Hardware:  
Metal W7 × L9.75"  
M2 U\$13.00 C\$17.00  
DTV3749D



### Nocturna Block Print Notebooks Set/2 Assorted

Outer: Cotton; Body: Paper  
W6 × L8" / W5 × L7"  
M6 U\$8.50 C\$12.00  
DNB2486D



### Nocturna Jacquard Dish towel

Cotton W18 × L28"  
M6 U\$5.00 C\$6.50  
DKT2495D



### Nocturna Block Print Dish towel

Cotton W18 × L28"  
M6 U\$6.00 C\$7.00  
DKT2489D



### Nocturna Imprint Trinket Tray

Stoneware W4.5 × L3.5"  
M6 U\$5.00 C\$6.00  
DTT2493D



### Nocturna Swedish Sponge Cloth

70% Cellulose, 30% Cotton W6.5 × L8"  
M6 U\$3.00 C\$3.00  
ESW2683D



### Nocturna Engraved Coasters Set/4

Acacia DIA4"  
M6 U\$15.00 C\$18.00  
DCO2494D



### Nocturna Imprint Mug

Stoneware DIA4 × H3.5" 14 oz  
M6 U\$6.00 C\$8.00  
DMG2490D



### Nocturna Imprint Bowl

Stoneware DIA6 × H2.25" 20 oz  
M6 U\$7.00 C\$8.50  
DBO2491D



### Nocturna Imprint Serving Bowl

Stoneware DIA9.75 × H2.9" 70 oz  
M1 U\$18.00 C\$20.00  
DSV2492D



# AMULET

*With this charming collection, fortune is sure to follow and good luck is your guide. Delicate details are woven into this assemblage of powerfully protective creatures and symbols.*

DESIGNED BY ANDREA



### Amulet Beaded Coasters

#### Set/4 Assorted

Beads: Glass; Backing:  
Cotton DIA4"  
M6 US\$14.00 C\$16.00  
DCO3757D



### Amulet To & Fro Tote

Body: Cotton; Embroidery: Polyester  
W13 x L13.5 x D2.25" / Strap Drop 10"  
M4 US\$12.50 C\$15.00  
DTB1434D



### Amulet Embroidered Notebook

Outer: 50% Cotton, 50% Linen; Body:  
Recycled Cotton Paper; Embroidery:  
Polyester W5.5 x L8 x H0.5" / 62  
Ruled Pages  
M6 US\$10.00 C\$12.50  
DNB1336D



### Amulet Halfmoon Pouch

Body: Cotton; Embroidery: Polyester  
W4.5 x L4.5"  
M2 US\$7.00 C\$9.00  
DTV1340D



### Amulet Embroidered Pouch

Body: Cotton Velvet;  
Embroidery: Polyester L5.75 x  
D2.75 x H4.75"  
M2 US\$13.00 C\$17.00  
DTV2530D



### Amulet Small Zipper Pouch

Body: Cotton; Embroidery: Polyester  
W7 x L4.5"  
M2 US\$8.50 C\$10.00  
DTV1339D



### Amulet Large Zipper Pouch

Body: Cotton; Embroidery: Polyester  
W9.75 x L7"  
M2 US\$11.00 C\$14.00  
DTV1338D



### Amulet Travel Jewelry Case

See open view on page 87  
Box: Recycled Cotton Paper; Lining:  
Polyester Velvet L4.25 x D2.5 x H2"  
M6 US\$7.00 C\$10.00  
DTV2053D



### Amulet Jewelry Box

See open view on page 86  
Box: Recycled Cotton Paper; Lining:  
Polyester Velvet L10 x D7.5 x H2"  
M4 US\$17.00 C\$20.00  
DTV1916D



### Amulet Trinket Tray

Metallic Gold Rim,  
Stoneware W3.6 x L3.5"  
M6 US\$5.00 C\$6.00  
DTT1435D



### Amulet Doormat

Coir W18 x L30"  
M2 US\$16.00 C\$21.00  
DDM1335D





**Amulet Midi Studio Mug**  
 Stoneware DIA3.5 x H3.125" 11 oz  
 M6 US\$4.50 C\$6.00  
**DMG1438D**  




**Amulet Studio Mug**  
 Stoneware DIA3.5 x H4.25" 14 oz  
 M6 US\$6.00 C\$6.50  
**DMG1437D**  




**Amulet Sustain Tea Infuser**  
 Body: Borosilicate Glass; Lid:  
 Bamboo Wood 12 oz  
 M4 US\$13.50 C\$16.00  
**DWB1312D**  




**Amulet Embroidered Dishtowel**  
 Body: Cotton; Embroidery: Polyester  
 W18 x L28"  
 M6 US\$10.00 C\$12.50  
**DKT1333D**  


# TEPPI

*A tapestry of fresh florals, pretty patterns, and cheerful colors weave together elements of nature and modern clean lines.*

DESIGNED BY ERIN

INNER DESIGN



**Teppi Imprint Trinket Dish**  
Stoneware DIA2.25 x H1"  
M12 U\$3.50 C\$4.25  
DTT3712D



**Teppi Beaded Coasters Set/4 Assorted**  
Beads: Glass; Backing: Cotton DIA4"  
M6 U\$14.00 C\$16.00  
DCO3758D



**Teppi Engraved Coasters Set/4**  
Acacia DIA4"  
M6 U\$15.00 C\$18.00  
DCO1884D



**Teppi Imprint Trinket Tray**  
Stoneware W4 x L3.875"  
M6 U\$5.00 C\$6.00  
DTT1922D



**Teppi Block Print Notebooks Set/2 Assorted**  
Outer: Cotton; Body: Paper  
W6 x L8" / W5 x L7"  
M6 U\$8.50 C\$12.00  
DNB2485D



**Teppi Swedish Sponge Cloth**  
70% Cellulose, 30% Cotton W6.5 x L8"  
M6 U\$3.00 C\$3.00  
ESW1954D



**Teppi Imprint Mug**  
Stoneware DIA4 x H3.5" 14 oz  
M6 U\$6.00 C\$8.00  
DMG1894D



**Teppi Imprint Bowl**  
Stoneware DIA6 x H2.25" 20 oz  
M6 U\$7.00 C\$8.50  
DBO1883D



**Teppi Imprint Serving Bowl**  
Stoneware DIA9.75 x H2.9" 70 oz  
M1 U\$18.00 C\$20.00  
DSV1929D





**Teppi Crossbody Bag**  
 Cotton Canvas; Hardware: Metal  
 W5.75 x H7.5 x D1.5"  
 M2 US\$15.00 C\$20.00  
 DTV3253D



**Teppi Double Cloth Dishtowel**  
 See reverse on page 54  
 Cotton W20 x L28"  
 M6 US\$6.00 C\$8.50  
 DKT1890D



**Teppi Block Print Dishtowel**  
 Cotton W18 x L28"  
 M6 US\$6.00 C\$7.00  
 DKT1923D



**Teppi Jacquard Dishtowel**  
 Cotton W18 x L28"  
 M6 US\$5.00 C\$6.50  
 DKT1924D



# EMBER

*Fan the fire of epic pursuits and let the ever-enduring spirit of the mighty, mythical dragon ignite the embers of your dreams.*

DESIGNED BY MICHELLE



**Ember To & Fro Tote**  
Cotton W13 x L13.5 x D2.25" /  
Strap Drop 10"  
M4 U\$10.00 C\$12.50  
DTB1913D



**Ember Sleep Mask**  
Outer: Cambric Cotton; Fill: Cotton;  
Bag: Cambric Cotton W3.5 x L7.75"  
M6 U\$7.00 C\$9.00  
DMK1910D



**Ember Travel Jewelry Case**  
See open view on page 87  
Box: Recycled Cotton Paper; Lining:  
Polyester Suede L4.25 x D2.5 x H2"  
M6 U\$7.00 C\$10.00  
DTV2056D



**Ember Halfmoon Pouch**  
Cotton; Embroidery: Polyester  
W4.5 x L4.5"  
M2 U\$7.00 C\$9.00  
DTV1893D



**Ember Small Zipper Pouch**  
Cotton W4.5 x L7"  
M2 U\$6.50 C\$7.50  
DTV1928D



**Ember Large Zipper Pouch**  
Cotton W7 x L9.75"  
M2 U\$9.00 C\$11.00  
DTV1927D



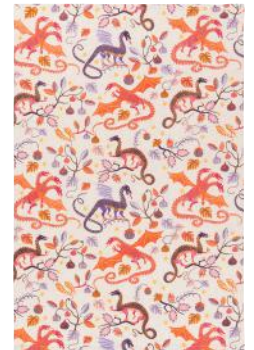
**Ember Embroidered Notebook**  
Outer: 50% Cotton, 50% Linen; Body:  
Recycled Cotton Paper; Embroidery: Polyester  
W5.5 x L8 x H0.5"  
M6 U\$10.00 C\$12.50  
DNB2525D



**Ember Swedish Sponge Cloth**  
70% Cellulose, 30% Cotton  
W6.5 x L8"  
M6 U\$3.00 C\$3.00  
ESW1956D



**Ember Dish Towels Set/2 Assorted**  
60% Cotton, 40% Linen W18 x L28"  
M6 U\$10.00 C\$12.50  
DKT1926D







# PLUME

*A glorious show of feathers unfurls awe and admiration.  
Colorful creatures on proud display ornament the  
beauty of nature in this fully fledged collection.*

DESIGNED BY CAITLIN



**Plume Throw**  
Cotton W55 x L67"  
M2 U\$30.00 C\$40.00  
**DTH2536D**



**Plume Studio Tote**  
Cotton W13 x H16 x D6" /  
Strap Drop 12.5"  
M4 U\$10.00 C\$12.50  
**DTB1915D**



**Plume Crossbody Bag**  
Cotton Canvas; Hardware: Metal  
W5.75 x H7.5 x D1.5"  
M2 U\$15.00 C\$20.00  
**DTV3252D**



**Plume Sleep Mask**  
Outer: Cambric Cotton; Fill: Cotton;  
Bag: Cambric Cotton W3.5 x L7.75"  
M6 U\$7.00 C\$9.00  
**DMK1909D**



**Plume Reusable Gift Wrap**  
85% Recycled Cotton, 15% Recycled  
Polyester W32 x L32"  
M6 U\$8.00 C\$10.00  
**DGW1892D**



**Plume Jewelry Box**  
See open view on page 86  
Box: Recycled Cotton Paper; Lining:  
Polyester Velvet L10 x D7.5 x H2"  
M4 U\$17.00 C\$20.00  
**DTV1917D**



**Plume Travel Jewelry Case**  
See open view on page 87  
Box: Recycled Cotton Paper; Lining:  
Polyester Velvet L4.25 x D2.5 x H2"  
M6 U\$7.00 C\$10.00  
**DTV2055D**



**Plume Midi Studio Mug**  
Stoneware DIA3.5 x H3.125" 11 oz  
M6 U\$4.50 C\$6.00  
**DMG1897D**



**Plume Studio Mug**  
Stoneware DIA3.5 x H4.25" 14 oz  
M6 U\$6.00 C\$6.50  
**DMG1895D**



**Plume Sustain Tea Infuser**  
Body: Borosilicate Glass;  
Lid: Bamboo Wood 12 oz  
M4 U\$13.50 C\$16.00  
**DWB1912D**



**Plume Doormat**  
Coir W18 x L30"  
M2 U\$16.00 C\$21.00  
**DDM1891D**



**Plume Embroidered Pouch**  
 Body: Cotton Velvet; Embroidery:  
 Polyester L5.75 x D2.75 x H4.75"  
 M2 US\$13.00 C\$17.00  
**DTV2523D**



**Plume Pencil Cosmetic Bag**  
 Body: Cotton; Lining: Vegan Waxed  
 Cotton L7 x H4"  
 M2 US\$10.00 C\$13.00  
**DTV1880D**



**Plume Small Cosmetic Bag**  
 Body: Cotton; Lining: Vegan Waxed  
 Cotton L8 x H5.5"  
 M2 US\$12.00 C\$15.00  
**DTV1881D**



**Plume Large Cosmetic Bag**  
 Body: Cotton; Lining: Vegan Waxed  
 Cotton L11.75 x H6.75"  
 M2 US\$15.00 C\$18.00  
**DTV1879D**



**Plume Swedish Sponge Cloth**  
 70% Cellulose, 30% Cotton W6.5 x L8"  
 M6 US\$3.00 C\$3.00  
**ESW1955D**



**Plume Double Cloth Dishtowel**  
 See reverse on page 54  
 Cotton W20 x L28"  
 M6 US\$6.00 C\$8.50  
**DKT1886D**



**Plume Dishtowels Set/2 Assorted**  
 60% Cotton, 40% Linen W18 x L28"  
 M6 US\$10.00 C\$12.50  
**DKT1925D**



## BELOVED COLLECTIONS



TIMBER



MYTH



ENTWINE



FINDERS KEEPERS



NEPTUNE



BURROW



ASTRAL



SOLEIL

Curated for their enduring appeal, our Beloved Collections offer color palettes, patterns, and designs that continue to delight eyes and capture hearts.

### MORE TO LOVE

Keep on flipping to shop these collections from the product category pages



FAR & AWAY



MEOW MEOW



## IMPRINT TRINKET DISHES

Our Imprint Trinket Dishes are a delightful dresser or console table addition. Pretty and petite, they are perfect for holding earrings, earbuds, and other small trinkets.

STONEWARE · EMBOSSED · DIA2.25 × H1" · HAND WASH ONLY

INNER DESIGN



**Wildgrove**

M12 U\$3.50 C\$4.25  
DTT3713D



INNER DESIGN



**Teppi**

M12 U\$3.50 C\$4.25  
DTT3712D



INNER DESIGN



**Catbloom**

M12 U\$3.50 C\$4.25  
DTT3711D



### A PETITE DISH WITH BIG POSSIBILITIES

Hold life's little treasures with this dainty dish. Dot them around the home to conveniently corral small items while adding a spot of color and charm. Organization has never looked so sweet.

## IMPRINT TRINKET TRAYS

Intriguing shapes and the alluring textural appeal of the wax-resist technique intermingle, making these trays delightful additions to your desk, dresser, and anywhere you want to collect or display your trinkets and treasures.

STONEWARE · EMBOSSED · SIZE VARIES · HAND WASH ONLY



**Wildgrove**

W3.5 × L4.25"  
M6 U\$5.00 C\$6.00  
DTT3717D



**Teppi**

W4 × L3.875"  
M6 U\$5.00 C\$6.00  
DTT1922D



**Olympus**

W3.8 × L4"  
M6 U\$5.00 C\$6.00  
DTT1332D



**Nocturna**

W4.5 × L3.5"  
M6 U\$5.00 C\$6.00  
DTT2493D



**Astral**

W5.6 × L3.9"  
M6 U\$5.00 C\$6.00  
DTT2502D



**Pilipala**

W5.25 × L3"  
M6 U\$5.00 C\$6.00  
DTT3245D



*making an impression:*

## THE WAX-RESIST TECHNIQUE

The wax-resist technique reflects our *Danica Studio* team's passion for the perfectly imperfect effect of handcrafted items. Our designs are etched in wax onto the surface of mugs and bowls prior to glazing. These etchings resist the glaze to create each unique piece in our Imprint collection.

# IMPRINT MUGS AND BOWLS

A special wax-resist technique makes each item unique, while the ribbed texture and glaze further the tactile quality.

STONEWARE · BOWL: 6" · 20 OZ · MUG: DIA4 × H3.5" · 14 OZ · DISHWASHER SAFE · MICROWAVE SAFE



**Wildgrove Imprint Bowl**  
M6 US\$7.00 C\$8.50  
DBO3715D



**Wildgrove Imprint Mug**  
M6 US\$6.00 C\$8.00  
DMG3714D



**Nocturna Imprint Bowl**  
M6 US\$7.00 C\$8.50  
DBO2491D



**Nocturna Imprint Mug**  
M6 US\$6.00 C\$8.00  
DMG2490D



**Pilipala Imprint Bowl**  
M6 US\$7.00 C\$8.50  
DBO3242D



**Pilipala Imprint Mug**  
M6 US\$6.00 C\$8.00  
DMG3243D



**Astral Imprint Bowl**  
M6 US\$7.00 C\$8.50  
DBO2505D



**Astral Imprint Mug**  
M6 US\$6.00 C\$8.00  
DMG2504D



**Catbloom Imprint Bowl**  
M6 US\$7.00 C\$8.50  
DBO2513D



**Catbloom Imprint Mug**  
M6 US\$6.00 C\$8.00  
DMG2512D



**Teppi Imprint Bowl**  
Semi Matte  
M6 US\$7.00 C\$8.50  
DBO1883D



**Teppi Imprint Mug**  
Semi Matte  
M6 US\$6.00 C\$8.00  
DMG1894D



**Myth Imprint Mug**  
M6 US\$6.00 C\$8.00  
7002600



**Olympus Imprint Mug**  
M6 US\$6.00 C\$8.00  
DMG1327D



**Timber Imprint Mug**  
M6 US\$6.00 C\$8.00  
7002702



**Entwine Imprint Mug**  
M6 US\$6.00 C\$8.00  
7002649



**Ink Imprint Mug**  
M6 US\$6.00 C\$8.00  
7002009



**Ochre Imprint Mug**  
M6 US\$6.00 C\$8.00  
7002011



**Collage Imprint Mug**  
M6 US\$6.00 C\$8.00  
7002139



**Mint Imprint Mug**  
M6 US\$6.00 C\$8.00  
7002010



**Pink Imprint Mug**  
M6 US\$6.00 C\$8.00  
7002012





## IMPRINT SERVING BOWLS

Our Danica Studio designs dance around the ring of these stoneware bowls. Moving seamlessly from dinnerware to decor, these dishwasher and microwave-safe bowls are durable and versatile. The low profile design makes the bowls easily stackable—so you don't have to choose just one!

STONEWARE · DIA9.75" × H2.9" · 70 OZ · DISHWASHER SAFE · MICROWAVE SAFE



**Wildgrove**  
M1 US\$18.00 C\$20.00  
DSV3716D



**Pilipala**  
M1 US\$18.00 C\$20.00  
DSV3244D



**Nocturna**  
M1 US\$18.00 C\$20.00  
DSV2492D



**Teppi**  
Semi Matte  
M1 US\$18.00 C\$20.00  
DSV1929D



## LASER ENGRAVED COASTER SETS

ACACIA WOOD · LASER ENGRAVED · 4" · SET OF 4 · TIED WITH LEATHER · WIPE CLEAN · HANGTAG PACKAGING



**Pilipala Set/4**  
M6 US\$15.00 C\$18.00  
DCO3201D



**Nocturna Set/4**  
M6 US\$15.00 C\$18.00  
DCO2494D



**Teppi Set/4**  
M6 US\$15.00 C\$18.00  
DCO1884D



**Olympus Set/4**  
M6 US\$15.00 C\$18.00  
DCO1408D



*natural variations in wood grains*

With natural acacia wood grain patterns, each coaster in these sets is truly one of a kind. Danica Studio designs are laser-engraved into the surface, creating a splendid medallion effect.



## BEADED COASTER SETS

Danica Studio designs radiate from the surface of our hand-beaded coaster sets. Crafted with dyed glass beads and a strong fabric core, these little beauties are made to last.

GLASS BEADS · COTTON BACKING · DIA4" · SPOT CLEAN ONLY



**Wildgrove Set/4 Assorted**

M6 US\$14.00 C\$16.00  
DCO3755D



**Disco Set/4 Assorted**

M6 US\$14.00 C\$16.00  
DCO3710D



**Gardenland Set/4 Assorted**

M6 US\$14.00 C\$16.00  
DCO3756D



**Teppi Set/4 Assorted**

M6 US\$14.00 C\$16.00  
DCO3758D



**Amulet Set/4 Assorted**

M6 US\$14.00 C\$16.00  
DCO3757D



*artisanal hand-beading:*

## A SHINING EXAMPLE OF CARE AND CRAFTSMANSHIP

Working from home in small villages in the north of India, artisans carefully craft each coaster in our sets. Glass beads are dyed to ensure they hold their color and then stitched onto a board backing for structure. Each backing is wrapped with cotton fabric that coordinates with our designs, creating a cohesive finish. Our Beaded Coaster Sets are shining examples of handcrafted pieces' exceptional beauty and quality.



# MIDI STUDIO MUGS

Not too big, not too small—the Midi Studio Mug is just the right size to fill your cup with some inspiration.

STONEWARE · 11 OZ · DIA3.5 × H3.1.25" · DISHWASHER SAFE · MICROWAVE SAFE



**Dogwood**  
M6 U\$4.50 C\$6.00  
DMG3741D



**Folktale**  
M6 U\$4.50 C\$6.00  
DMG3731D



**Gardenland**  
M6 U\$4.50 C\$6.00  
DMG3219D



**Venus**  
M6 U\$4.50 C\$6.00  
DMG3218D



**Moonlit**  
Metallic Gold,  
Hand wash only,  
do not microwave  
M6 U\$5.00 C\$6.00  
DMG3220D



**Catbloom**  
M6 U\$4.50 C\$6.00  
DMG2511D



**Plume**  
M6 U\$4.50 C\$6.00  
DMG1897D



**Ember**  
M6 U\$4.50 C\$6.00  
DMG1898D



**Amulet**  
M6 U\$4.50 C\$6.00  
DMG1438D



**Neptune**  
M6 U\$4.50 C\$6.00  
7002685



**Burrow**  
M6 U\$4.50 C\$6.00  
DMG1311D



**Far and Away**  
M6 U\$4.50 C\$6.00  
7002724



# STUDIO MUGS

*This modern mug features a unique rectangular handle.*

STONEWARE · 14 OZ · DIA3.5 × H4.25" · DISHWASHER SAFE · MICROWAVE SAFE

REVERSE



**Folktale**  
M6 US\$6.00 C\$6.50  
DMG3730D



**Dogwood**  
M6 US\$6.00 C\$6.50  
DMG3740D



**Gardenland**  
M6 US\$6.00 C\$6.50  
DMG3222D



**Venus**  
M6 US\$6.00 C\$6.50  
DMG3221D



**Moonlit**  
Metallic Gold,  
Hand wash only,  
do not microwave  
M6 US\$6.00 C\$7.00  
DMG3223D



**Catbloom**  
M6 US\$6.00 C\$6.50  
DMG2510D



**Plume**  
M6 US\$6.00 C\$6.50  
DMG1895D



**Ember**  
M6 US\$6.00 C\$6.50  
DMG1896D



**Amulet**  
M6 US\$6.00 C\$6.50  
DMG1437D



**Burrow**  
M6 US\$6.00 C\$6.50  
DMG1310D



**Neptune**  
M6 US\$6.00 C\$6.50  
7002684



**Soleil**  
M6 US\$6.00 C\$6.50  
7002558



## FORMATION MUGS

Delicious-to-the-touch double glazing and bands of sun-washed color form a striking effect on these well-rounded mugs.

DEVELOPED IN-HOUSE · STONEWARE · VARIED SHAPES · 14 OZ · 16 OZ (DISCO ONLY) · DISHWASHER SAFE · MICROWAVE SAFE



**Disco**  
DIA3.5 × H4"  
M4 U\$6.50 C\$8.25  
DMG3951D



**Kismet**  
DIA6 × H3.9"  
M4 U\$6.50 C\$8.25  
DMG2527D



**Sequence**  
DIA3.25 × H3.5"  
M4 U\$6.50 C\$8.25  
DMG3217D



**Prism**  
DIA5.5 × H3.5"  
M4 U\$6.50 C\$8.25  
DMG1343D



**Refract**  
DIA5.3 × H3.5"  
M4 U\$6.50 C\$8.25  
DMG1342D



.....

### FORM A COORDINATED LOOK

see page 60 for our matching dishtowels  
see page 85 for our matching dopp bags

.....









## DOUBLE CLOTH DISHTOWELS

Lush to the touch, these layered dishtowels offer double the design and durability. A loose weave allows for quick drying times and gives the towel a lightweight feel. The second layer offers a mirrored way to see each design.

100% COTTON · 20 × 28" · MACHINE WASH COLD · TUMBLE DRY LOW · U-BAND PACKAGING



**Wildgrove**  
M6 US\$6.00 C\$8.50  
DKT3718D



**Myth**  
M6 US\$6.00 C\$8.50  
DKT2136D



**Gardenland**  
M6 US\$6.00 C\$8.50  
DKT3203D



**Venus**  
M6 US\$6.00 C\$8.50  
DKT3202D



**Catbloom**  
M6 US\$6.00 C\$8.50  
DKT2508D



**Entwine**  
M6 US\$6.00 C\$8.50  
DKT1887D



**Plume**  
M6 US\$6.00 C\$8.50  
DKT1886D



**Teppi**  
M6 US\$6.00 C\$8.50  
DKT1890D



# EMBROIDERED DISHTOWELS

Embroidered dishtowels with playful tassels to complement their gleeful palettes.

COTTON (ASTRAL AND AMULET) · 60% COTTON, 4% LINEN (WILDGROVE AND GARDENLAND) · POLYESTER EMBROIDERY  
18 x 28" · KNOTTED FRINGE (EXCEPT WILDGROVE) · MACHINE WASH COLD · HANG TO DRY · HANGTAG PACKAGING



**Wildgrove**  
M6 US\$10.00 C\$12.50  
DKT3719D



**Gardenland**  
M6 US\$10.00 C\$12.50  
DKT3228D



**Astral**  
M6 US\$10.00 C\$12.50  
DKT2497D



**Amulet**  
M6 US\$10.00 C\$12.50  
DKT1333D



♥ These tried and true products have proved themselves as customer favorites.



## JACQUARD DISHTOWELS

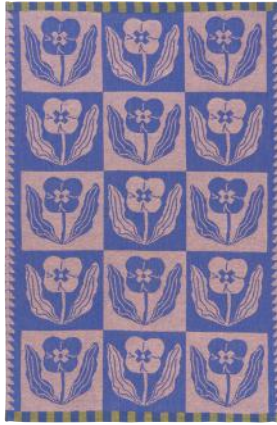
*Bold and geometric patterns are featured on these durable dishtowels.*

COTTON · 18 × 28" · WASH WARM · TUMBLE DRY LOW · U-BAND PACKAGING



### Folktales

M6 U\$5.00 C\$6.50  
DKT3729D



### Teppi

M6 U\$5.00 C\$6.50  
DKT1924D



### Nocturna

M6 U\$5.00 C\$6.50  
DKT2495D



### Myth

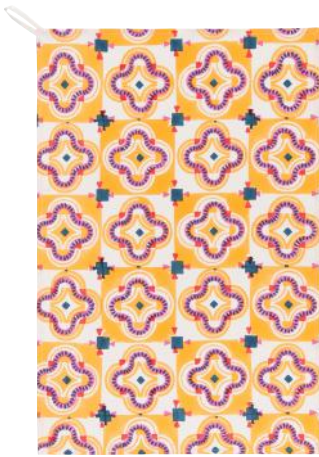
M6 U\$5.00 C\$6.50  
7002662



# BLOCK PRINT DISHTOWELS

Block-printed by hand, our custom designs come to life on these cotton dishtowels, bringing the look and feel of artisanal crafts to any kitchen.

COTTON · 18 x 28" · BLOCK-PRINTED BY HAND · WASH COLD DELICATE · HANG TO DRY · HANGTAG PACKAGING




**Pilipala**  
M6 US\$6.00 CS\$7.00  
DKT3210D  





**Nocturna**  
M6 US\$6.00 CS\$7.00  
DKT2489D  




**Teppi**  
M6 US\$6.00 CS\$7.00  
DKT1923D  




**Myth**  
M6 US\$6.00 CS\$7.00  
7002606  


## carved & stamped: THE PROCESS OF BLOCK PRINT

A centuries-old technique, the block print process begins with a relief pattern carved into blocks of wood. Depending on the detail and intricacy of the design, the carving of the wooden block can take anywhere from hours to weeks to complete. The block is then covered with ink and meticulously stamped across the surface of the textile.

The subtle variations in the resulting design align harmoniously with *Danica Studio's* spirit of innovation, informed by the past. And now you can embrace the beauty of the handcrafted with our bespoke block print designs.



**SCAN THE QR CODE**  
to learn about the art of block print  
or visit [danicabrands.com/ds-blockprint](https://danicabrands.com/ds-blockprint)





*imperfections of block print and handmade items*  
Slight variations of texture and finish make each item uniquely beautiful.



## FORMATION DISHTOWEL SETS

Bands of sun-washed color align to form a simply striking effect. Prewashed for extra softness, these 100% cotton dishtowels are shaping up to be a kitchen classic.

100% COTTON · 18 × 28" · SET OF 2 · WASH WARM · TUMBLE DRY LOW · HANGTAG PACKAGING



**Disco Set/2**

M6 U\$8.50 C\$11.00

DKT3709D



**Sequence Set/2**

M6 U\$8.50 C\$11.00

DKT3229D



**Kismet Set/2**

M6 U\$8.50 C\$11.00

DKT2526D



**Refract Set/2**

M6 U\$8.50 C\$11.00

DKT1351D



**Prism Set/2**

M6 U\$8.50 C\$11.00

DKT1350D



.....

### FORM A COORDINATED LOOK

see page 52 for our matching mugs

see page 85 for our matching dopp bags

.....



# DISHTOWEL SETS

Noteworthy coordinating designs adorn these soft, absorbent, and luxurious linen-cotton blend dishtowels.

60% COTTON / 40% LINEN · 18 × 28" · SET OF 2 · MACHINE WASH WARM · TUMBLE DRY LOW · HANGTAG PACKAGING



**Dogwood Set/2 Assorted**

M6 US\$10.00 C\$12.50

DKT3739D



**Folktales Set/2 Assorted**

M6 US\$10.00 C\$12.50

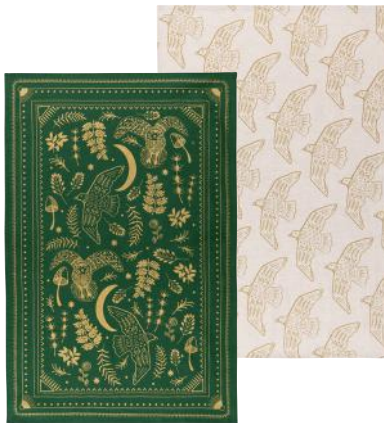
DKT3728D



**Venus Set/2 Assorted**

M6 US\$10.00 C\$12.50

DKT3226D



**Moonlit Set/2 Assorted**

Metallic Gold

M6 US\$10.00 C\$12.50

DKT3227D



**Catbloom Set/2 Assorted**

M6 US\$10.00 C\$12.50

DKT2507D



**Plume Set/2 Assorted**

M6 US\$10.00 C\$12.50

DKT1925D



**Ember Set/2 Assorted**

M6 US\$10.00 C\$12.50

DKT1926D



**Soleil Set/2 Assorted**

M6 US\$10.00 C\$12.50

7002547



**Meow Meow Set/2 Assorted**

M6 US\$10.00 C\$12.50

7002043





# SWEDISH SPONGE CLOTHS

Made from cotton and plant-based cellulose fibers, these compostable and odor-resistant cloths are a sustainable alternative to paper towels and plastic sponges.

70% CELLULOSE / 30% COTTON · 6.5 × 8" · MACHINE WASH WARM · LAY FLAT TO DRY · COMPOSTABLE · STICKER PACKAGING



**Dogwood**  
M6 US\$3.00 C\$3.00  
ESW3746D



**Folktales**  
M6 US\$3.00 C\$3.00  
ESW3700D



**Sequence**  
M6 US\$3.00 C\$3.00  
ESW3309D



**Pilipala**  
M6 US\$3.00 C\$3.00  
ESW3306D



**Venus**  
M6 US\$3.00 C\$3.00  
ESW3307D



**Gardenland**  
M6 US\$3.00 C\$3.00  
ESW3305D



**Moonlit**  
Metallic Gold  
M6 US\$3.00 C\$3.00  
ESW3308D



**Catbloom**  
M6 US\$3.00 C\$3.00  
ESW2681D



**Plume**  
M6 US\$3.00 C\$3.00  
ESW1955D



**Ember**  
Metallic Gold  
M6 US\$3.00 C\$3.00  
ESW1956D



**Nocturna**  
M6 US\$3.00 C\$3.00  
ESW2683D



**Timber**  
M6 US\$3.00 C\$3.00  
ESW1957D

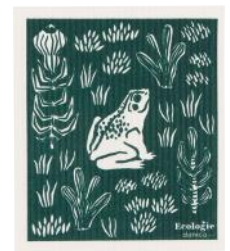


SCAN THE QR CODE

to browse store display solutions for Swedish sponge cloths like our counter and floor spinner racks or visit [danicabrands.com/store-displays](https://danicabrands.com/store-displays)



**Teppi**  
M6 US\$3.00 C\$3.00  
ESW1954D



**Boundless**  
M6 US\$3.00 C\$3.00  
ESW1492D





## CROSSBODY BAGS

Designed for across town or across the world, the ever-popular crossbody bag gets an artful upgrade. With an adjustable strap, cell phone pocket, inner card panel, and zippered inner pocket, this bag is the lightweight and hands-free solution for running errands, sightseeing, or taking a nature walk.

DEVELOPED IN-HOUSE · COTTON · METAL HARDWARE · 5.75 × 7.5 × 1.5" · MACHINE WASH COLD DELICATE · LAY FLAT TO DRY · HANGTAG PACKAGING



**Dogwood**  
M2 US\$15.00 C\$20.00  
DTV3743D



**Gardenland**  
M2 US\$15.00 C\$20.00  
DTV3251D



**Venus**  
M2 US\$15.00 C\$20.00  
DTV3250D



**Teppi**  
M2 US\$15.00 C\$20.00  
DTV3253D



**Plume**  
M2 US\$15.00 C\$20.00  
DTV3252D



# HIP BAGS

Stride to the market, step onto the trail; hands-free adventure awaits with our comfortable, durable hip bag. Sits comfortably on the hip or across the chest with a wide webbing strap and is the perfect size for your cellphone, wallet, and other essentials.

100% COTTON CANVAS OUTER · 9 × 6" · OUTER CELL PHONE POCKET · BRASS ZIPPER & RING PULL · WEBBING STRAPS · COTTON LINING · MACHINE WASH COLD · LAY FLAT TO DRY · HANGTAG PACKAGING



**Venus**  
M2 US\$14.00 C\$17.00  
DTV3753D



**Gardenland**  
M2 US\$14.00 C\$17.00  
DTV3230D



**Catbloom**  
M2 US\$14.00 C\$17.00  
DTV2515D



**Meow Meow**  
M2 US\$14.00 C\$17.00  
7002613



**Soleil**  
M2 US\$14.00 C\$17.00  
7002611



REVERSE SIDE



# TO & FRO TOTES


Square-shaped totes with extra-wide handles are comfy to carry and feature an inner pocket.

COTTON · 13 × 14" · INSIDE POCKET · MACHINE WASH COLD DELICATE · HANG TO DRY · HANGTAG PACKAGING




**Wildgrove**  
Embroidered  
M4 US\$10.00 C\$12.50  
DTB3724D  





**Gardenland**  
M4 US\$10.00 C\$12.50  
DTB3235D  




**Venus**  
Embroidered  
M4 US\$12.50 C\$15.00  
DTB3234D  





**Astral**  
Embroidered  
M4 US\$12.50 C\$15.00  
DTB2498D  





**Flight Of Fancy**  
M4 US\$10.00 C\$12.50  
7002341  




**Ember**  
M4 US\$10.00 C\$12.50  
DTB1913D  




**Amulet**  
Embroidered  
M4 US\$12.50 C\$15.00  
DTB1434D  




**Meow Meow**  
M4 US\$10.00 C\$12.50  
7002045  


# STUDIO TOTES

Lightweight yet sturdy, slender studio totes feature strong handles with reinforced hardware.

COTTON · 13 × 16" · INSIDE POCKET WITH D-RING · MACHINE WASH COLD DELICATE · HANG TO DRY · HANGTAG PACKAGING

REVERSE



**Folk tale**  
Double-sided Print  
M4 US\$10.00 C\$12.50  
DTB3734D



**Moonlit**  
Metallic Gold  
M4 US\$10.00 C\$12.50  
DTB3233D



**Catbloom**  
M4 US\$10.00 C\$12.50  
DTB2519D



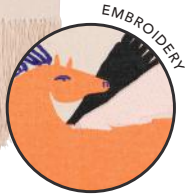
**Plume**  
Double-sided Print  
M4 US\$10.00 C\$12.50  
DTB1915D



# WALL ART

Enliven your space with the color, texture, and personality of Danica Studio designs. Tassels and intriguing shapes add to the unique charm of these artful wall hangings.

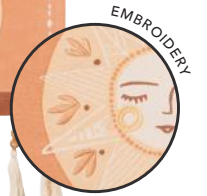
PINE WOOD DOWELS · COTTON ROPE AND FABRIC · EMBROIDERED DETAILS · SPOT CLEAN · HANGTAG PACKAGING



**Astral**  
Polyester Embroidery  
W11 × L24"  
M2 US\$10.00 C\$14.00  
**DWA2501D**



**Myth**  
Polyester Embroidery / Wooden Beads  
W17.2 × L24.2"  
M2 US\$20.00 C\$22.50  
**7002712**



**Soleil**  
Polyester Embroidery / Wooden Beads  
W12.5 × L24"  
M2 US\$20.00 C\$22.50  
**7002734**



## THROWS

Transforming the couch, bed, or reading nook into a canvas, our generously sized throws bring color and comfort to any space. Woven with original Danica Studio designs and finished with hand-twisted tassels, our washable cotton throws enhance the home with a welcome layer of warmth and whimsy.

BRUSHED COTTON · 55 × 67" · HAND WASH · HANG TO DRY · HANGTAG PACKAGING



**Venus**  
M2 US\$30.00 C\$40.00  
DTH3211D



**Plume**  
M2 US\$30.00 C\$40.00  
DTH2536D



**Catbloom**  
M2 US\$30.00 C\$40.00  
DTH2535D







## FORMATION CANDLE HOLDERS


Color-blocked and sculpted, our Formation Candle Holders offer outstanding displays for candlelit occasions or evenings of quiet contemplation. A variety of shapes and color combinations allows personal expression to shine.

STONEWARE · VARIED SHAPES · HAND-PAINTED · HAND WASH ONLY




**Disco**  
W4 × L5.25 × H4"  
M4 US\$10.00 C\$12.00  
DCN3702D  




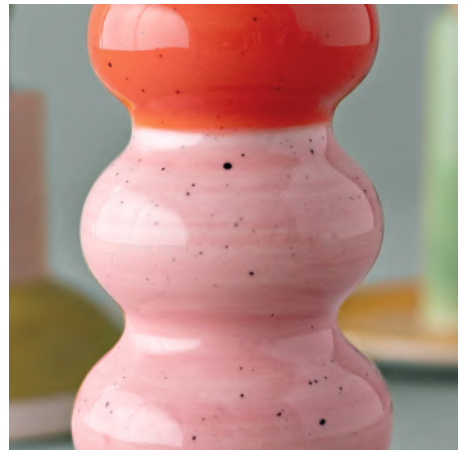

**Refract**  
DIA3 × H3"  
M4 US\$6.00 C\$8.00  
DCN3706D  




**Prism**  
DIA4.25 × H6.25"  
M4 US\$10.00 C\$12.00  
DCN3703D  




**Sequence**  
DIA3 × H4.75"  
M4 US\$8.00 C\$10.00  
DCN3705D  






## WOVEN FORMATION RUGS


Grounded in function and elevated by color and pattern, our 100% cotton Formation rugs enliven the landscape of any home's decor. Our in-house designs are woven by hand, crafting carefully constructed and vibrant pieces. Weighty yet washable, the beauty of these area rugs will stand the test of time.

COTTON · 24 × 36" · MACHINE WASH COLD · LAY FLAT TO DRY · HANGTAG PACKAGING




**Disco**  
M2 US\$17.50 C\$22.50  
DRU3707D  





**Kismet**  
M2 US\$17.50 C\$22.50  
DRU3255D  




**Prism**  
M2 US\$17.50 C\$22.50  
DRU3256D  




**Sequence**  
M2 US\$17.50 C\$22.50  
DRU3254D  


*form meets function:*

## BESPOKE COLORS AND HAND-WOVEN ELEGANCE

Laying the foundation for a modern approach to home decor, our woven Formation rugs are grounded in function and elevated by color and pattern. Crafted carefully using a bespoke cut-shuttle loom method, each rug is woven by hand. Yarns are specially dyed to bring our in-house designed Formation patterns to life. This attention to detail results in vibrant pieces that make an artistic statement on the floors or walls of the home. Adding to their appeal, these medium-weight rugs are made of 100% cotton and are machine washable.



## PRINTED DOORMATS

Our doormats are made from coir fiber, harvested from fertilizer- and pesticide-free palm trees with limited water requirements in Kerala, India.

COIR FIBER · 18 × 30" · BIODEGRADABLE · U-BAND PACKAGING



### Folktales

M2 US\$16.00 C\$21.00  
DDM3738D



### Wildgrove

M2 US\$16.00 C\$21.00  
DDM3727D



### Venus

M2 US\$16.00 C\$21.00  
DDM3236D



### Moonlit

M2 US\$16.00 C\$21.00  
DDM3237D



### Meow Meow

M2 US\$16.00 C\$21.00  
7002060



### Catbloom

M2 US\$16.00 C\$21.00  
DDM2509D



### Astral

M2 US\$16.00 C\$21.00  
DDM2503D



### Amulet

M2 US\$16.00 C\$21.00  
DDM1335D



### Plume

M2 US\$16.00 C\$21.00  
DDM1891D



## SHAPED DOORMAT

COIR FIBER · 18 × 30" · BIODEGRADABLE · U-BAND PACKAGING



### Solstice

M2 US\$18.00 C\$22.50  
7002224





---

*reducing our footprints:*  
**SUSTAINABLE COIR**

Danica Studio doormats are made from responsibly grown, harvested, and manufactured coir fiber. Fertilizer- and pesticide-free palm trees are transformed into coir and jute fiber by our manufacturer in Kerala, India. Our coir fiber mats are incredibly durable, and because they have no vinyl backing, they are biodegradable when they've finally worn out their welcome.

---

# BANDANAS

Adorned with our Danica Studio prints, these silky soft bandanas are a unique and versatile complement to your wardrobe. Wear around your neck, on your wrist, or tie one to your tote to create your own signature style.

85% RECYCLED COTTON / 15% RECYCLED POLYESTER · 21 × 21" · MACHINE WASH COLD DELICATE · HANG TO DRY · HANGTAG PACKAGING



**Burrow**  
M4 U\$5.00 C\$7.00  
DSC1320D



**Finders Keepers**  
M4 U\$5.00 C\$7.00  
7002682



**Neptune**  
M4 U\$5.00 C\$7.00  
7002696





## SLEEP MASKS

Our new sleep masks are a dream come true. Made of soft cotton and padded in all of the right places, drifting off has never looked so good. Under the comfortable cover of darkness, settle in for a good night's sleep in la-la-land.

OUTER: 100% CAMBRIC COTTON · FILL: 100% COTTON · BAG: 100% CAMBRIC COTTON  
3.5 × 7.75" · MACHINE WASH COLD · GENTLE CYCLE · DRY FLAT · HANGTAG PACKAGING



REVERSE SIDE

**Venus**  
M6 US\$7.00 C\$9.00  
DMK3208D



**Catbloom**  
M6 US\$7.00 C\$9.00  
DMK2521D



**Plume**  
M6 US\$7.00 C\$9.00  
DMK1909D



**Ember**  
M6 US\$7.00 C\$9.00  
DMK1910D



## SCRUNCHIES

The scrunchie gets a modern 'up-do' with our Danica Studio designs. Lined with a soft cotton fabric, our scrunchies are made to hold hair in place, moving with you from downward dog to drinks downtown.

100% COTTON · DIA5.5" · MACHINE WASH COLD · GENTLE CYCLE · DRY FLAT · HANGTAG PACKAGING



**Venus**  
M6 US\$2.50 C\$3.50  
DTV3207D



**Catbloom**  
M6 US\$2.50 C\$3.50  
DTV2520D



**Ember**  
M6 US\$2.50 C\$3.50  
DTV1907D



## EMBROIDERED FLAT POUCHES

Tucked in a tote or at hand on the vanity, embroidered designs and tassel details give everyday routines a beautiful boost.

COTTON VELVET · COTTON LINING · POLYESTER EMBROIDERY · METAL HARDWARE · 7 × 9.75" · SPOT CLEAN ONLY · HANGTAG PACKAGING



### Dogwood

M2 U\$13.00 C\$17.00

DTV3744D



### Folktales

M2 U\$13.00 C\$17.00

DTV3735D



### Nocturna

M2 U\$13.00 C\$17.00

DTV3749D



## EMBROIDERED COIN PURSES

Charming and compact, these embroidered coin purses feature a rounded shape with a playful tassel detail. Carry coins, cards, and other small essentials with a dash of personal expression.

COTTON VELVET · COTTON LINING · POLYESTER EMBROIDERY · METAL HARDWARE · 4.4 × 4.6" · SPOT CLEAN ONLY · HANGTAG PACKAGING



### Wildgrove

M2 U\$10.00 C\$12.50

DTV3723D



### Venus

M2 U\$10.00 C\$12.50

DTV3748D



### Catbloom

M2 U\$10.00 C\$12.50

DTV3747D



## ZIPPER POUCHES

Sturdy zipper pouches made from 100% cotton are perfect for storing accessories, travel essentials, and more.

COTTON CANVAS · SMALL: 7 × 4.5" · LARGE: 9.75 × 7" · SPOT CLEAN ONLY · HANGTAG PACKAGING



**Moonlit Small**  
M2 U\$6.50 C\$7.50  
DTV3232D



**Moonlit Large**  
Metallic Print  
M2 U\$9.00 C\$11.00  
DTV3231D



**Ember Small**  
M2 U\$6.50 C\$7.50  
DTV1928D



**Ember Large**  
M2 U\$9.00 C\$11.00  
DTV1927D



**Amulet Small**  
Single-Sided  
Embroidery Print  
M2 U\$8.50 C\$10.00  
DTV1339D



**Amulet Large**  
Single-Sided  
Embroidery Print  
M2 U\$11.00 C\$14.00  
DTV1338D



**Catbloom Small**  
M2 U\$6.50 C\$7.50  
DTV2517D



**Catbloom Large**  
M2 U\$9.00 C\$11.00  
DTV2516D



## HALFMOON POUCHES

Keep loose change and cards in a handy small pouch that's easy to slip into a pocket or purse.

COTTON · POLYESTER EMBROIDERY · 4.5" · SPOT CLEAN ONLY · HANGTAG PACKAGING



**Dogwood**  
M2 U\$7.00 C\$9.00  
DTV3745D



**Gardenland**  
M2 U\$7.00 C\$9.00  
DTV3204D



**Astral**  
M2 U\$7.00 C\$9.00  
DTV2499D



**Ember**  
Double-Sided  
Embroidery Print  
M2 U\$7.00 C\$9.00  
DTV1893D



**Amulet**  
M2 U\$7.00 C\$9.00  
DTV1340D



## QUILTED COSMETIC BAGS

Our Quilted Cosmetic Bags offer a chic, box-shaped design in solid colors with a tassel accent. Stylish and spacious, they're perfect for organizing beauty essentials at home or on the go.

COTTON VELVET · QUILTED PATTERN VARIES · METAL HARDWARE · 8 × 5 × 2.75" · SPOT CLEAN ONLY · HANGTAG PACKAGING



**Fig**  
M2 U\$13.00 C\$17.00  
DTV3750D



**Copper**  
M2 U\$13.00 C\$17.00  
DTV3752D



**Jade**  
M2 U\$13.00 C\$17.00  
DTV3751D



SIDE VIEW



# COSMETIC BAGS

Store makeup, toiletries, craft supplies, and more in our multi-functional cosmetic bags. The lining is easy to wipe clean.

LARGE: 11.75 x 7" · SMALL: 8 x 5.5" · PENCIL: 7 x 4" · SPOT CLEAN ONLY · HANGTAG PACKAGING



**Venus Pencil**  
 Body: Cotton; Lining: Vegan Waxed Cotton  
 M2 U\$10.00 C\$13.00  
**DTV3206D**



**Venus Small**  
 Body: Cotton; Lining: Vegan Waxed Cotton  
 M2 U\$12.00 C\$15.00  
**DTV3209D**



**Venus Large**  
 Body: Cotton; Lining: Vegan Waxed Cotton  
 M2 U\$15.00 C\$18.00  
**DTV3205D**



**Plume Pencil**  
 Body: Cotton; Lining: Vegan Waxed Cotton  
 M2 U\$10.00 C\$13.00  
**DTV1880D**



**Plume Small**  
 Body: Cotton; Lining: Vegan Waxed Cotton  
 M2 U\$12.00 C\$15.00  
**DTV1881D**



**Plume Large**  
 Body: Cotton; Lining: Vegan Waxed Cotton  
 M2 U\$15.00 C\$18.00  
**DTV1879D**



**Far and Away Pencil**  
 Body: Cotton; Lining: Vegan Leather  
 M2 U\$10.00 C\$13.00  
**7002567**



**Flight Of Fancy Small**  
 Body: Linen; Lining: Vegan Leather  
 M2 U\$12.00 C\$15.00  
**7002347**



# EMBROIDERED POUCHES

Embroidered and embellished with tassels and beading, these elegant cotton velvet pouches are a cushiony-soft yet sturdy space for storing all your trinkets and treasures.

COTTON VELVET · COTTON LINING · POLYESTER EMBROIDERY · 5.75 × 2.75 × 4.75" · SPOT CLEAN ONLY · HANGTAG PACKAGING

SIDE VIEW



**Wildgrove**  
M2 US\$13.00 C\$17.00  
DTV3722D



**Gardenland**  
M2 US\$13.00 C\$17.00  
DTV3239D



**Venus**  
M2 US\$13.00 C\$17.00  
DTV3238D



**Astral**  
M2 US\$13.00 C\$17.00  
DTV2496D



**Catbloom**  
Beaded Embellishments  
M2 US\$13.00 C\$17.00  
DTV2518D



**Plume**  
Beaded Embellishments  
M2 US\$13.00 C\$17.00  
DTV2523D



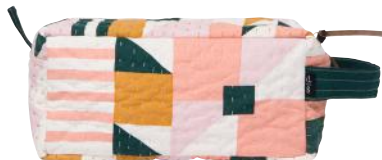
**Amulet**  
M2 US\$13.00 C\$17.00  
DTV2530D



## DOPP BAGS

Quilting is given a modern refresh with the thoughtfully-designed Dopp Bag. Embroidery-stitched by hand and made of 100% cotton, these bags are machine washable and durable. With a sewn-on handle, cosmetics or other contents can be carried confidently.

100% COTTON · HANDMADE KANTHA EMBROIDERY STITCH · 10 × 5" · MACHINE WASH COLD · LAY FLAT TO DRY  
REMOVABLE LEATHER PULL · HANGTAG PACKAGING



**Formation Sequence**

M2 US\$17.50 C\$22.00

DTV3257D



**Formation Kismet**

M2 US\$17.50 C\$22.00

DTV2537D



**Formation Prism**

M2 US\$17.50 C\$22.00

DTV1347D



.....

### FORM A COORDINATED LOOK

see page 52 for our matching mugs

see page 60 for our matching dishtowels

.....



**Formation Refract**

M2 US\$17.50 C\$22.00

DTV1348D



# JEWELRY BOXES

Hoops, strands, rings, and other tiny treasures are safe and sound inside our new jewelry boxes. Printed with Danica Studio designs, these sturdy and secure boxes add a layer to your self-expression and style.

BOX: 100% RECYCLED COTTON PAPER · LINING: 100% POLYESTER VELVET · MAGNETIC SNAP CLOSURE · 10 × 7.5 × 2" · WIPE CLEAN WITH A DAMP CLOTH · U-BAND PACKAGING



**Wildgrove**  
M4 US\$17.00 C\$20.00  
DTV3725D



**Venus**  
M4 US\$17.00 C\$20.00  
DTV3215D



**Catbloom**  
M4 US\$17.00 C\$20.00  
DTV2529D



**Amulet**  
M4 US\$17.00 C\$20.00  
DTV1916D



**Plume**  
M4 US\$17.00 C\$20.00  
DTV1917D



CLOSED VIEW





# TRAVEL JEWELRY CASES

Keep your treasured trinkets safe and organized while you're on the go. In bold prints and charming patterns, your storage will be just as stylish as the contents inside.

BOX: 100% RECYCLED COTTON PAPER · LINING: 100% POLYESTER SUEDE (CATBLOOM, EMBER, AND VENUS), 100% POLYESTER VELVET (WILDGROVE, DOGWOOD, VENUS, PLUME, AND AMULET) · MAGNETIC SNAP CLOSURE  
4.25 x 2.5 x 2" · WIPE CLEAN WITH A DAMP CLOTH · U-BAND PACKAGING



**Wildgrove**  
Polyester Velvet Lining  
M6 US\$7.00 C\$10.00  
DTV3726D



**Dogwood**  
Polyester Velvet Lining  
M6 US\$7.00 C\$10.00  
DTV3736D



**Catbloom**  
Polyester Suede Lining  
M6 US\$7.00 C\$10.00  
DTV2528D



**Plume**  
Polyester Velvet Lining  
M6 US\$7.00 C\$10.00  
DTV2055D

CLOSED VIEW



**Ember**  
Polyester Suede Lining  
M6 US\$7.00 C\$10.00  
DTV2056D



**Amulet**  
Polyester Velvet Lining  
M6 US\$7.00 C\$10.00  
DTV2053D



**Venus**  
Polyester Velvet Lining  
M6 US\$7.00 C\$10.00  
DTV3216D



## CATCH-ALL TRAYS

Catch-all trays add a dash of delight and practicality throughout the home. Made of sustainable mango wood, these ideally-sized trays help to keep glasses, keys, and other everyday essentials in sight and on hand.

MANGO WOOD · SIZE VARIES · WIPE CLEAN WITH DAMP CLOTH · DO NOT SOAK



### Folktales

W8 × L5.5 × H1.5"  
M2 U\$7.00 C\$10.00  
DTT3733D



### Venus

W7 × L5 × H1.5"  
M2 U\$7.00 C\$10.00  
DTT3246D



SIDE VIEW



### Catbloom

W8 × L5 × H1.5"  
M2 U\$7.00 C\$10.00  
DTT3249D



# TRINKET TRAYS

Ceramic dishes in unique shapes make convenient landing spots for keys, loose change, small jewelry, and paperclips.

CERAMIC · SIZE VARIES · HAND WASH ONLY



**Dogwood**  
W5.5 × L2.75"  
M6 U\$5.00 C\$6.00  
DTT3742D



**Gardenland**  
W3.875 × H4.25"  
M6 U\$5.00 C\$6.00  
DTT3225D



**Boundless**  
Metallic Gold W3.5 × L3.75"  
M6 U\$5.00 C\$6.00  
7002620



**Catbloom**  
W6.3 × L4.5"  
M6 U\$5.00 C\$6.00  
DTT2514D



**Meow Meow**  
W3.75 × L3.5"  
M6 U\$5.00 C\$6.00  
7002049



**Far and Away**  
Metallic Gold W5.5 × W3"  
M6 U\$5.00 C\$6.00  
7002575



**Amulet**  
Metallic Gold W3.6 × L3.5"  
M6 U\$5.00 C\$6.00  
DTT1435D



**Venus**  
W4.3 × H4.6"  
M6 U\$5.00 C\$6.00  
DTT3224D



**Soleil**  
DIA4.75"  
M6 U\$5.00 C\$6.00  
7002552



**Ember**  
Metallic Gold W4.7 × L4.3"  
M6 U\$5.00 C\$6.00  
DTT1921D





# BLOCK PRINT NOTEBOOK SETS

Awaiting your creative imprint, our notebook sets are designed to inspire. Cotton covers create a canvas for Danica Studio's custom block print patterns. Made by hand, each notebook is imbued with the energy of artful expression.

SOFT COTTON COVER · 6 × 8" · 5 × 7" · 50 RULED PAGES · ACCENT COLOR ON INSIDE COVER · SET OF 2 · U-BAND PACKAGING



**Wildgrove Set/2 Assorted**

M6 US\$8.50 C\$12.00

**DNB3720D**



**Teppi Set/2 Assorted**

M6 US\$8.50 C\$12.00

**DNB2485D**



**Myth Set/2 Assorted**

M6 US\$8.50 C\$12.00

**DNB2487D**



INSIDE VIEW



**Pilipala Set/2 Assorted**

M6 US\$8.50 C\$12.00

**DNB3240D**



**Nocturna Set/2 Assorted**

M6 US\$8.50 C\$12.00

**DNB2486D**



*imperfections of block print and handmade items*  
Slight variations of texture and finish make each item uniquely beautiful.



## FORMATION PRINTED NOTEBOOKS

Screen-printed with our fan-favorite Formation designs and embellished with contrast stitching, these pocket-sized notebooks create space for inspiration on the go.

COTTON COVER · 4 × 6" · 50 PLAIN PAGES · ACCENT COLOR ON INSIDE COVER · U-BAND PACKAGING

REVERSE SIDE



**Disco**  
M6 U\$3.00 C\$4.00  
DNB3708D



REVERSE SIDE



**Kismet**  
M6 U\$3.00 C\$4.00  
DNB2833D



REVERSE SIDE



**Refract**  
M6 U\$3.00 C\$4.00  
DNB2832D



REVERSE SIDE



**Prism**  
M6 U\$3.00 C\$4.00  
DNB2831D



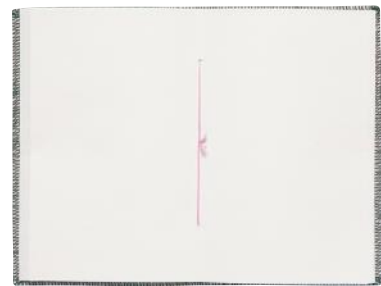
REVERSE SIDE



**Sequence**  
M6 U\$3.00 C\$4.00  
DNB3241D



INSIDE VIEW



*from pixels to print:*

## THE PROCESS OF SCREEN PRINTING

A time-honored technique with ancient beginnings, screen printing meshes beautifully with Danica Studio's dedication to the unsurpassed quality of handcrafted items. To create these items, our in-house designs are stenciled onto a mesh screen. Ink is then 'pushed' through the screen and onto the surface of the various materials used throughout our collections.





# RING BOUND EMBROIDERED NOTEBOOKS

The embroidered covers of our ring bound notebooks are sure to prompt inspired ideas to fill the pages within.

50% COTTON / 50% LINEN AND RECYCLED PAPER COVER · POLYESTER EMBROIDERY · W5.5 × L8 × H0.5" · 62 RULED PAGES · U-BAND PACKAGING



**Wildgrove**  
M6 US\$10.00 C\$12.50  
DNB3721D



**Gardenland**  
M6 US\$10.00 C\$12.50  
DNB3214D



**Catbloom**  
M6 US\$10.00 C\$12.50  
DNB2542D



**Amulet**  
M6 US\$10.00 C\$12.50  
DNB1336D



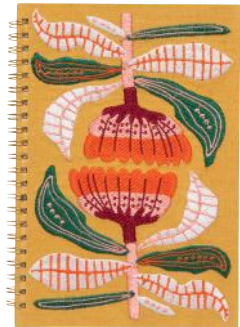
INSIDE VIEW



**Astral**  
M6 US\$10.00 C\$12.50  
DNB2500D



**Ember**  
M6 US\$10.00 C\$12.50  
DNB2525D



**Venus**  
M6 US\$10.00 C\$12.50  
DNB3213D





# REUSABLE GIFT WRAPS

Decorative, square-shaped fabrics can be folded and tied to create a stunning and sustainable gift presentation.

85% RECYCLED COTTON / 15% RECYCLED POLYESTER · 32 × 32" · MACHINE WASH COLD DELICATE · HANG TO DRY · HANGING CARD PACKAGING



**Burrow**  
M6 US\$8.00 C\$10.00  
DGW1319D



**Catbloom**  
M6 US\$8.00 C\$10.00  
DGW2522D



**Plume**  
M6 US\$8.00 C\$10.00  
DGW1892D



**Finders Keepers**  
M6 US\$8.00 C\$10.00  
7002679



SCAN THE QR CODE

to learn more about the art of Furoshiki gift wrapping or visit [danicabrands.com/ds-furoshiki](https://danicabrands.com/ds-furoshiki)



# resources at your fingertips

Our website is your go-to hub for everything you need to browse, shop, and sell Danica brands. We offer an extensive library of product catalogs, sales support materials, product details, marketing images, and more— all designed to help you sell to your customers.

[DANICABRANDS.COM/RESOURCES](https://www.danicabrands.com/resources)

## TERMS & CONDITIONS

### PRICES

Prices do not include taxes. Net wholesale to trade only: USA Orders F.O.B · Sea TAC, WA. Canadian Orders F.O.B · Vancouver, BC. Prices are subject to change without notice. No C.O.D. deliveries.

### MINIMUM

Minimum order value is \$350. Each product has a minimum quantity to order in and pack sizes may not be broken. *Brands that may be combined: Now Designs by Danica, Danica Studio, Danica Heirloom and Danica Jubilee and Ecologie by Danica.*

### TERMS

Orders not reaching a discount minimum

will be filled with no discount. A service charge will apply to overdue accounts. All terms are subject to credit approval.

### CLAIMS

Claims of any nature must be made within five days after receipt of merchandise.

### SHIPPING WINDOW

Ship dates are considered to be accurate within one week before or after requested date.

### BACK ORDERS

Please advise us at the time of placing your order whether you accept back orders. Back orders ship automatically and without notification within 60 days of the original shipment. Back orders below \$100,

those held over 60 days from the original shipment or those with a low value, we reserve the right to cancel. Back orders ship under the same terms as the original shipment.

### RETURNS

No returns will be accepted without prior written authorization. All returns are subject to a restocking charge. Please note that our return address is not our shipping address. All clearance product is final sale.

### NEW ACCOUNTS

All new accounts are subject to a minimum opening order. Please ask your sales representative for more information. New accounts must submit a credit reference sheet for the order to be processed.

### ORDER ONLINE

Go to [danicabrands.com](https://www.danicabrands.com) or send an email to [info@danicabrands.com](mailto:info@danicabrands.com).

### ONLINE PAYMENT

Process your payment with our easy to use and secure payment portal: [www.danicabrands.com/pay-now](https://www.danicabrands.com/pay-now)

### FREIGHT

Freight terms apply to Canadian provinces and the 48 contiguous United States only. Customers in other states & territories must provide a freight forwarder's address or collect account number.

## OUR ENVIRONMENT

By using paper made with 10% post-consumer recycled content, the following resources have been saved.

ENVIRONMENTAL IMPACT ESTIMATES WERE MADE USING THE ENVIRONMENTAL PAPER NETWORK PAPER CALCULATOR VERSION 4.0. FOR MORE INFORMATION VISIT [WWW.PAPERCALCULATOR.ORG](http://WWW.PAPERCALCULATOR.ORG).

**7** fully grown trees  
**1,987** kilograms greenhouse gases  
**6,397** litres water  
**15** kilograms solid waste



This catalog is printed in Canada on Forest Stewardship Council® certified paper. The FSC® supports responsible forest management worldwide.

FSC® is not responsible for any calculations on saving resources by choosing this paper.

## OUR BRANDS



**DANICA JUBILEE**  
Canada + USA



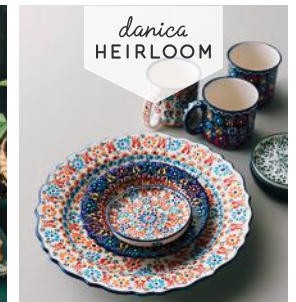
**NOW DESIGNS BY DANICA**  
Canada + USA



**ECOLOGIE BY DANICA**  
Canada + USA



**DANICA STUDIO**  
Canada + USA



**DANICA HEIRLOOM**  
Canada + USA

CANADA EXCLUSIVE BRAND



# early buy!

Each season, we offer our retail customers the opportunity to pre-order products for their stores during Early Buy. Place an Early Buy order today and enjoy **savings on the entire order**, a chance to reserve stock and lock in prices, and delight in knowing your shelves will be stocked with great products just when you need them!

BOOKING DATES: FEBRUARY 15 – MARCH 31, 2025

SHIP DATES: JULY 1 – SEPTEMBER 15, 2025

[DANICABRANDS.COM/EARLY-BUY](https://DANICABRANDS.COM/EARLY-BUY)



← scan me!

*ready to order?*

#### YOUR SALES REPRESENTATIVE

Your Danica sales rep is an invaluable resource that can help craft the perfect order.

[DANICABRANDS.COM/SALES-REPS](https://DANICABRANDS.COM/SALES-REPS)

#### SHOP ONLINE

Ordering online is easy and available 24/7! Go to our website to get started.

[DANICABRANDS.COM](https://DANICABRANDS.COM)

#### VISIT OUR SHOWROOMS

Explore all the great Danica products in person at one of our showrooms or markets.

[DANICABRANDS.COM/SHOWS](https://DANICABRANDS.COM/SHOWS)

# last chance!

Your last chance to get great Danica products at reduced prices!  
Browse the **Danica Clearance Catalog** through our website, and place your order online or with your Sales Representative.

— UP TO —  
**50%**  
—→ OFF ←—

GREAT  
PRODUCTS  
at  
REDUCED  
PRICES!

[DANICABRANDS.COM/CATALOG-GALLERY](https://DANICABRANDS.COM/CATALOG-GALLERY)



← scan me!

**danica**  
THE COMPANY YOU KEEP  
[danicabrands.com](https://danicabrands.com)

#### CANADA

348 West 7th Ave · Vancouver BC · V5Y 1M4 · CANADA  
info@danicabrands.com

t. 888 632 6422

t. 604 255 6150 f. 604 255 6120

media@danicabrands.com

#### USA

Danica C/O UPS SCS  
1221-29<sup>TH</sup> Street NW · Suite A  
Auburn · WA · 98001-2431 · USA

t. 866 253 9001

f. 604 255 6151



**danica**  
STUDIO

*Danica Studio* was founded in 2009 in Vancouver, where city, ocean, mountains, and islands converge. The beauty and energy of that unique combination have brought together designers from all over the world, who collaborate on designs inspired by their shared love of textiles, travel, and our beautiful West Coast home.

**FOLLOW US**

---

facebook.com/danicastudio  
instagram.com/danica\_studio  
danicastudio.com

**TRADESHOWS**

---

Please find information about our showrooms and upcoming tradeshow at [danicabrands.com](http://danicabrands.com)

**ORDER ONLINE**  
*or become a retailer*

---

**[danicabrands.com](http://danicabrands.com)**

